

Documentation

TourHighlights Pro

**PanotourPro-Plugin
by Michael Brüning
Servicios Compunics**

Version: 1.0, 04.07.2017

Contact info:

Michael Brüning
Servicios Compunics
+505 84360437
+49 2572 9009180
mail: m.bruening@compunics.com.ni
skype: compunics.com.ni

Contents

Inhaltsverzeichnis

Contact info:.....	1
Contents.....	2
Overview.....	3
General plugin configuration options.....	3
Tourhighlight hotspot style (default) settings.....	4
Advanced use case: multiple presentation modes.....	5
Individual TourHighlight hotspot settings.....	6
Use the shortestway-option:.....	6
Feature comparion list.....	8
Known issues and restrictions.....	8
Copyright notice and End User License Agreement.....	8

Overview

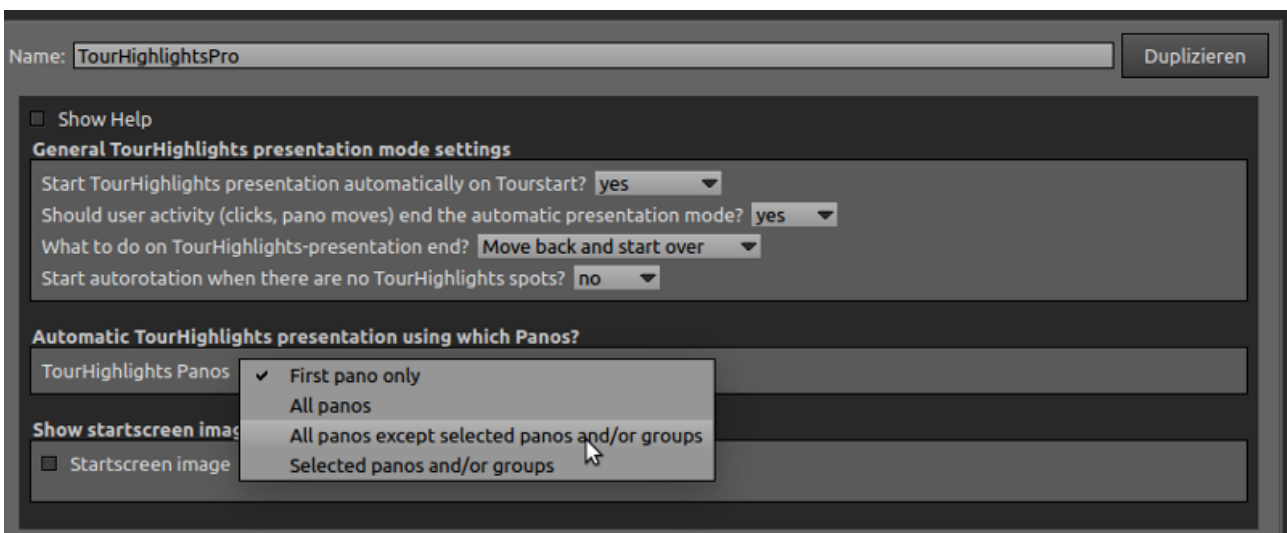
The plugin enables automatic changes of panos and movements between individual hotspots. The presentation can be set to an endless loop with or without the option to be terminated by the users.

You can select if the presentation mode covers all panos, only the first pano or a list of selected panos and/or groups. Unlike the free plugin this „Pro“-version of the „Tourhighlights“ plugin offers a convenient way to select (or unselect) individual panoramas or whole groups for the automatic presentation mode.

For a list of differences of both versions please have a look at the „Feature comparison list“ later in this document.

General plugin configuration options

In the „Style“-Tab of PTP you can define the general plugin configuration settings.



You can select if the TourHighlights presentation should be started automatically, and if user activity like a click or pano movement shall stop the presentation. Please note that there is no „pause/resume“ function, enabling this option means to let the users end the presentation mode.

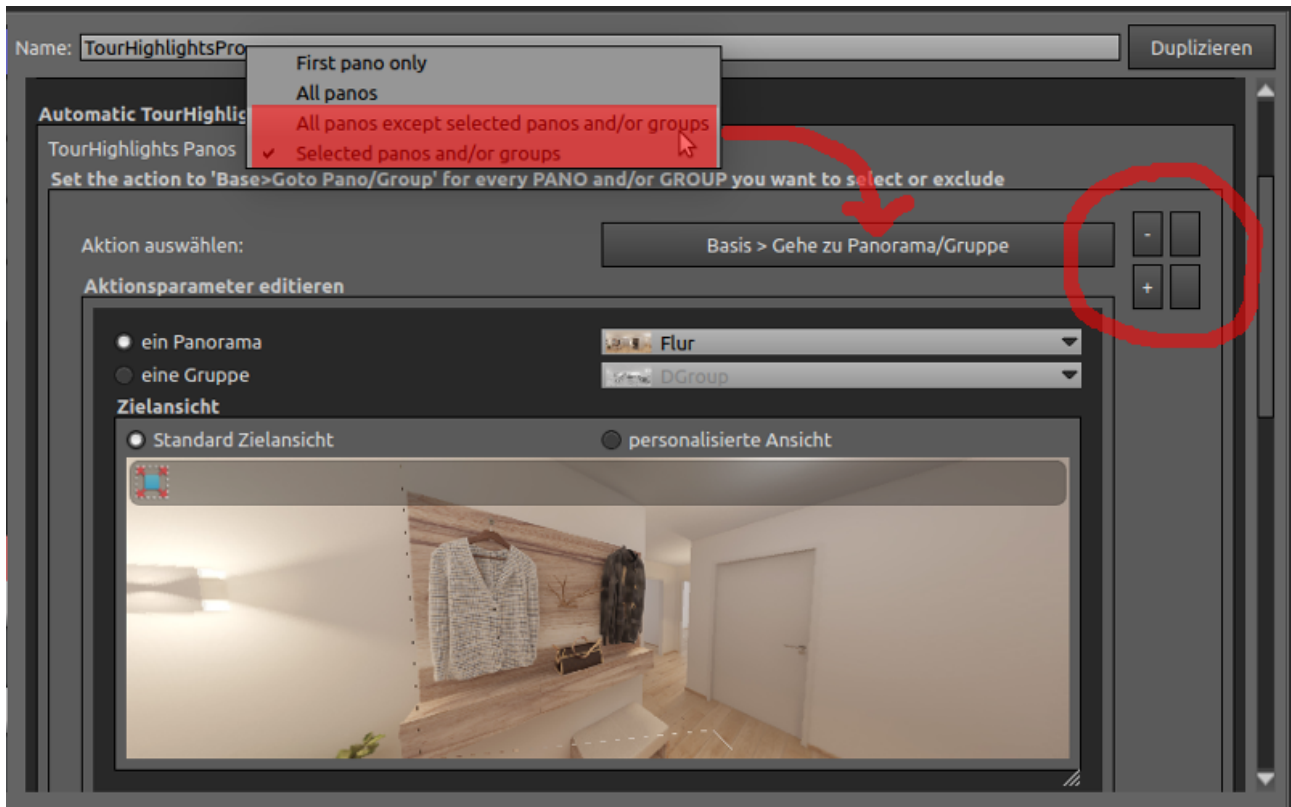
Generally, each pano included into the presentation mode will have one or more hotspots marking the points of interest to be shown. You can also include a pano without assigning any hotspot, in this case activate the option to perform a full 360° rotation of that panorama. The direction, acceleration and speed of the rotation can then be set.

The „Pro“-version of the „TourHighlights“ plugin offers a convenient way to select individual panoramas or whole groups for the automatic presentation mode: using the two alternative options „All panos except selected panos and/or groups“ and „Selected panos and/or groups“ you can easily setup the panos that shall be used for the TourHighlight presentation. Set the action to „Base > Goto Pano/Group“ as many times as you need to pick the desired panoramas and/or groups to either

unselect them from or to select them to the list of panos that build your tour presentation.

Using the marked arrow boxes on the right you can also re-arrange the order in which the panos get displayed during presentation mode, so you are not bound to the order the panos have in your projects list.

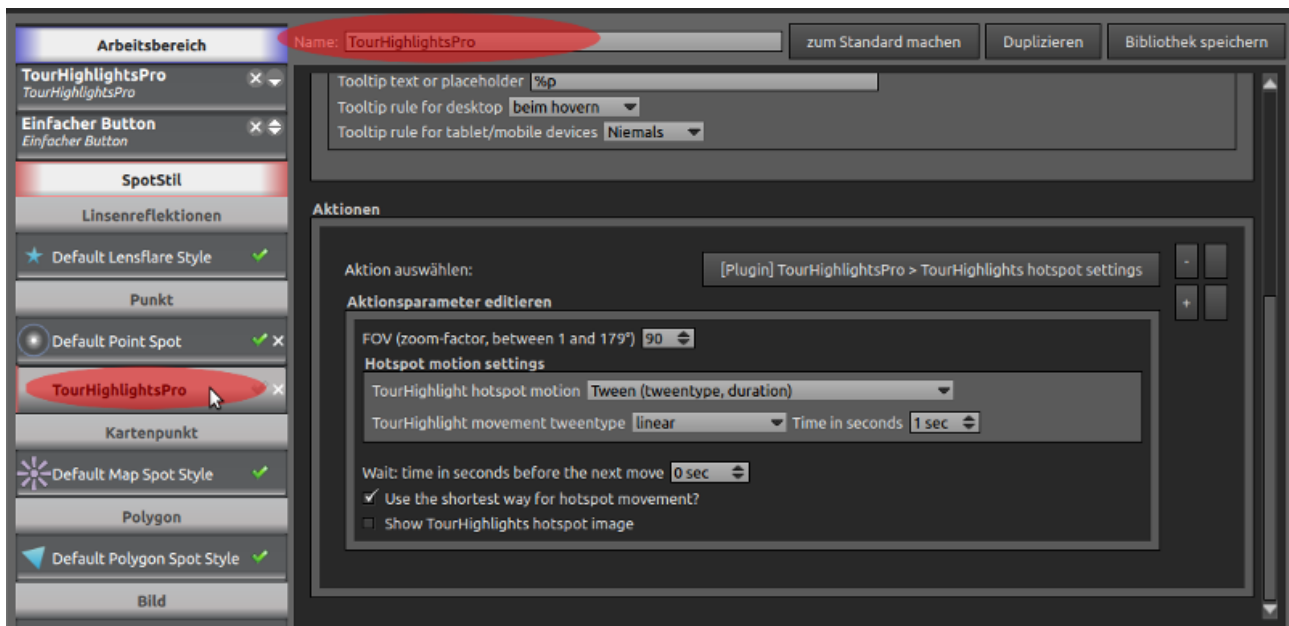
(Un-)selecting panos and/or groups:



The pano/group selector in this case is used to select the individual item you want to take part in the presentation mode, other settings like a custom view of the pano or the transition modes are ignored.

Tourhighlight hotspot style (default) settings

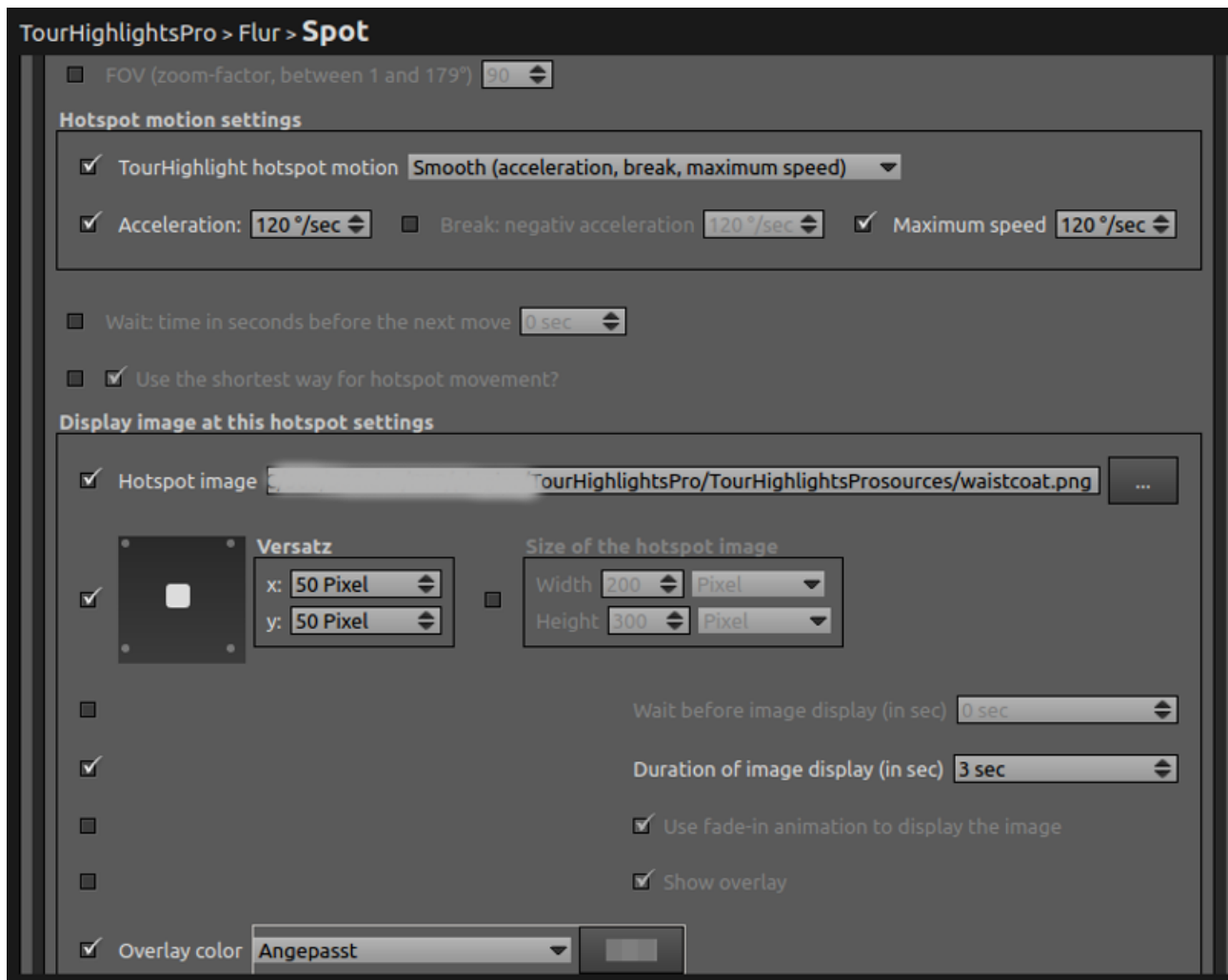
To actually be able to apply and change the presentation mode movements, create a Hotspot style named „TourHighlightsPro“ and assign the action „[Plugin] TourHighlightsPro – TourHighlights hotspot settings“ to it. The values you enter here are then taken as default for the individual hotspots settings.



Advanced use case: multiple presentation modes

In case you want to setup multiple presentation modes within one tour, you have to incorporate the „TourHighlightsPro“ plugin for every presentation mode and name the respective Hotspotstyle accordingly. PTP automatically assigns an instance number to additional plugin instances, so the first additional plugin will be named „TourHighlightsPro1“, the second additional instance will be: „TourHighlightsPro2“ and so on. It is important to assign the instance name including the instance number to the hotspot style of each presentation mode.

Individual TourHighlight hotspot settings



The following settings are supported:

The first section contains the hotspot movement settings as follows:

The FOV-value sets the Zoom-factor, it has to be between 1° and 179°.

The motion settings selector offers three ways of customizing the hotspots movement:

- linear movement at at given speed (in degrees per second)
- smooth (selectable acceleration, break and maximum speed)
- tweentype with individual duration

The tweentypes offer different movement characteristics, feel free to experiment with the type that you like most. Additional information on the tweentypes can be found here:

<http://hosted.zeh.com.br/tweener/docs/en-us/misc/transitions.html>

Use the shortestway-option:

Without the "shortestway"-setting activated the KR pano viewer chooses the direction in the range

from -180° to $+180^\circ$, giving the full 360° of a pano. In this mode, the view never flips over the "end" of a pano.

Applying the "shortestway"-setting changes the behaviour so that it always adds to or subtracts from the current position, so the values can grow over 360° and the view „flips over“ endlessly.

The "shortestway"-setting moves the view the shortest possible way from the current to the new view destination. But not using this setting does not guarantee that the movement will take the longer way, or the opposite direction.

Using the next section you can display individual images relative to the hotspots position, and the way they get displayed:

- delay in seconds before the image gets displayed
- image display duration in seconds
- Fadein-effect
- Image-overlay

Feature comparison list

<i>Feature</i>	<i>Free</i>	<i>Pro</i>
Pano selection	PanoID-listing	Pano/Group-selector
Hotspot movement settings	hotspot description message	GUI value selectors
Automatic start	Yes	Yes
Presentation mode termination	Yes	Yes
Image display on individual spots	No	Yes
Customization of movements	Zoom and Speed	Zoom and Speed Acceleration, Break and Max Tweentypes and duration Full 360° rotation selectable
Incorporation of panos without TourHighlight-hotspots	No	Full 360° rotation selectable
Multi-instance-capable	No	Yes

Known issues and restrictions

Please note that this plugin does not offer a „pause/resume“ function, enabling the option to terminate the presentation mode by user activity means to let the users end the presentation mode.

Copyright notice and End User License Agreement

Copyright (c) 2017 Michael Brüning, Servicios Compunics

When purchasing a commercial plugin the author grants you perpetual, non-exclusive, non-revocable, non-transferable right to install and use the software. The plugin is sold under a single-user personal licence. You may install and use the plugin on as many devices as you like only if you are the only person to use the software.

You may not copy or electronically transfer the plugin for any purpose other than to install and use in the environment as described above or for backup purposes. You may not sell, rent, lease, sublicense or otherwise distribute the plugin.

THIS PLUGIN IS PROVIDED BY THE COPYRIGHT HOLDERS AND CONTRIBUTORS "AS IS" AND ANY EXPRESS OR IMPLIED WARRANTIES, INCLUDING, BUT NOT LIMITED TO, THE IMPLIED WARRANTIES OF MERCHANTABILITY AND FITNESS FOR A PARTICULAR PURPOSE ARE DISCLAIMED. IN NO EVENT SHALL THE COPYRIGHT OWNER OR CONTRIBUTORS BE LIABLE FOR ANY DIRECT, INDIRECT, INCIDENTAL, SPECIAL, EXEMPLARY, OR CONSEQUENTIAL DAMAGES (INCLUDING, BUT NOT LIMITED TO, PROCUREMENT OF SUBSTITUTE GOODS OR SERVICES; LOSS OF USE, DATA, OR PROFITS; OR BUSINESS INTERRUPTION) HOWEVER CAUSED AND ON ANY THEORY OF LIABILITY, WHETHER IN CONTRACT, STRICT LIABILITY, OR TORT (INCLUDING NEGLIGENCE OR OTHERWISE) ARISING IN ANY WAY OUT OF THE USE OF THIS PLUGIN, EVEN IF ADVISED OF THE POSSIBILITY OF SUCH DAMAGE.

If you do not agree to the terms of this agreement, you may not install and use the plugin.